

Delta Secondary School

Grade 8 to Grade 9

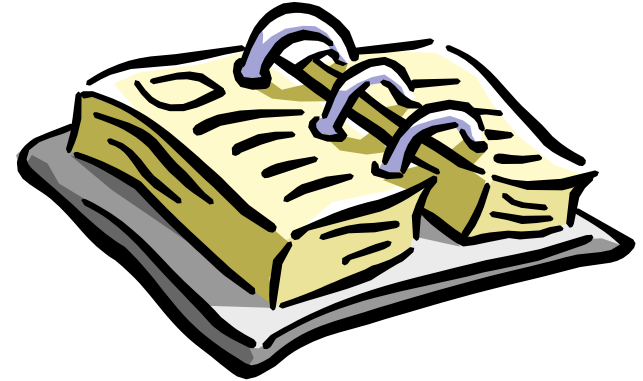
Course Selection

2023 - 2024



Overview

- Acknowledgement
- School Information
- Grade 9 Course Offerings
- Elective Options
- 2023 – 2024 Schedule Options
- Questions



Land Acknowledgement

I would like to acknowledge the traditional territories of the Tsawwassen and Musqueam First Nations and all the Hun'qumi'num speaking people who have been stewards of this land since time immemorial.

I would also like to offer my respects to all the Elders who have gone before us and to all Canadians who are on the journey of Reconciliation.



Administration

- Principal

Mr. John Pavao

Gr.12



- Vice Principals

Mr. Mike Annandale

Gr.8 & Gr.10



Ms. Margaret Callander

Gr.9 & Gr.11



Counsellors

- Mr. Lalli, Last Names A – Cli
- Ms. Greene, Last Name Clo – Li
- Mrs. Rohwer, Last Name Lj – O
– & International Students
- Mrs. Gillis, Last Name P - Z



Important Registration Information

- Course Selection Due Date : **March 3, 2023**
 - Course Selection will be done on My Education BC.
 - Students should try the ***forgot password link*** if you are unable to login or need password reset*
 - New registrations (i.e. non-catchment, private school) will fill out a paper course selection at the school



Process for Choosing Courses

1. Student logs on to their MyED account
 - <https://www.myeducation.gov.bc.ca>
2. Top Tab: “My Info” - Side Tab: “Requests”
3. Make Selections
4. Select “Post” to finalize requests



Important Registration Information

- **Gr.9: courses – 6 required & 3 Electives (& 2 Alt.)**
 - *Career Education 9 is a required off-timetable*
 - *Alternate course in case of any timetabling conflicts*
 - *Elective & Alternate Courses can be ranked by 1st, 2nd, and 3rd preference to assist with creating complete student schedules*
- Prerequisites not required for elective grade 9 courses
- Course selection booklet available on the school website:
 - <https://de.deltasd.bc.ca/programs-courses/course-planning/course-selection/>



Gr. 9 Course Selections

Required Courses (6 courses):

- English Language Arts 9
- Socials Studies 9
- Mathematics 9
- Science 9
- Physical & Health Education 9
- *Career Education 9 (off timetable)*

Elective Courses (3 scheduled courses)

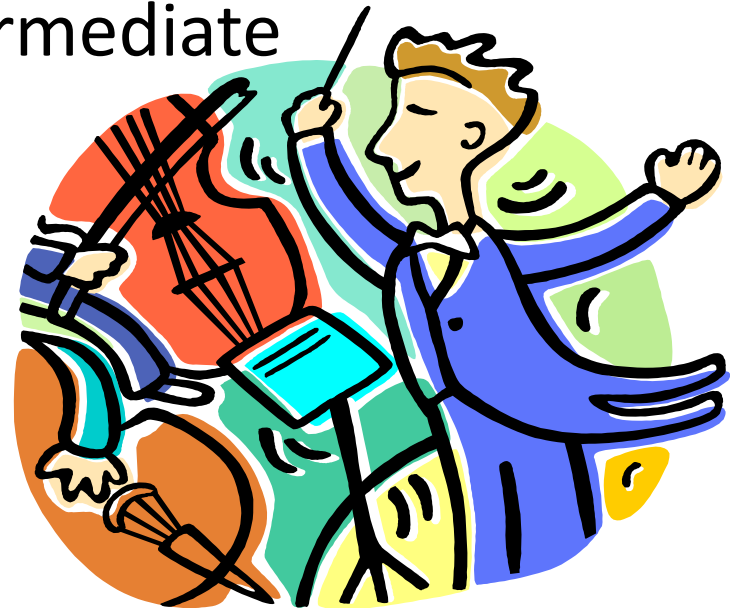
- *Elective #1*
- *Elective #2*
- *Elective #3*
- *Alternate #1*
- *Alternate #2*

**** Please remember to rank your elective and alternate courses in order of preference (1st, 2nd, 3rd choice) to assist us with creating complete student schedules*



Electives: Visual/Performing Arts

- Visual Arts 9 – Drawing & Painting (2D)
- Visual Arts 9 – Ceramics & Sculpture (3D)
- Visual Arts 9 – Graphics & Photography
- Music 9 – Concert Band – Beginner
- Music 9 – Concert Band – Intermediate
- Music 9 – Guitar
- Drama 9
- Dance 9



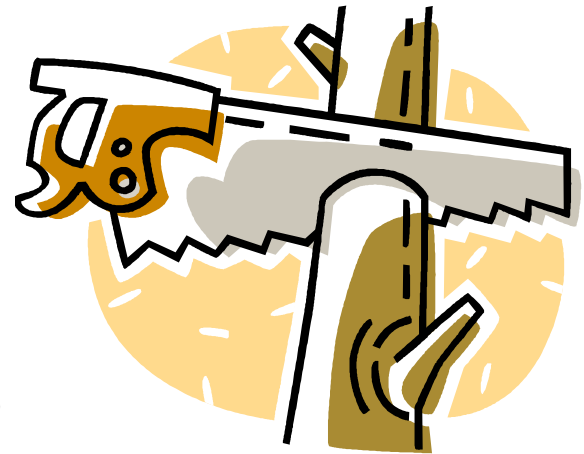
Electives: After school Courses

- Music 9 - Concert Choir
- Theatre Performance 9
(Theatre Company)
- Stagecraft 9
(Theatre Production)



Electives: Applied Design, Skills & Technologies

- ADST 9 – Computer Animation
- ADST 9 – Technology Education: Engineering
- ADST 9 – Woodwork
- ADST 9 – Metal Work
- ADST 9 – Power Technology
(Intro Small Engines)



- ADST 9 – Food Studies
- ADST 9 – Textiles (Sewing)



Electives: Languages

- French 9
- Spanish 9



Grade 9 Support Block

(Additional Student Support)

- *Depending on student need, a support block is scheduled as an 8th course (students lose an elective course) or as a non-enrolling support in addition to their 8 blocks.*
- **School Support Programs—“Strategies”**
 - **Learning Assistance (LA - LST)** – Recommendation of LST Team and/or School Based Team Meetings at DSS
 - **LD Support (LD - LST)** – for students with a “Q” designation
- **District Support Programs—“Inclusive Learning Programs”**
 - Placements are determined by the school district—each program has its own criteria regarding designations
 - Grad Quest
 - Supportive Learning
 - Modified Academics
 - Life Skills



Academies 2023 - 2024

(www.deltaacademies.ca)

- **FILM ACTING ACADEMY, Gr. 8 - 12**
 - Delta Manor Education Centre
- **FILM PRODUCTION ACADEMY, Gr. 8 – 12**
 - Delta Manor Education Centre
- **FILM VISUAL EFFECTS ACADEMY, Gr. 8 -12**
 - Delta Manor Education Centre

Families are responsible for getting their children to and from the Academy programs



FINANCIAL ASSISTANCE

For Academies

- Bursary Assistance & Family Discounts Available
 - 25% off second Child
 - Please contact Paige Hansen at phansen@deltaschools.ca



CLUBS At DSS

- *Alliance Club
- *Anti-Racism Committee
- *Art Club
- *Audio Club
- *Commerce Club
- *Connections Club
- *Dungeons & Dragons Club
- *DYAC Club
- *Environmental Club
- *First Responders Club
- *Games & Lego Club
- *Human Rights Club
- *Interact Club
- *Jazz Band Club
- *Performance Club
- *Stagecraft Club
- * Student Government
- * Tutoring Club

Don't see a club you like? Why not start your own? Find a teacher sponsor and get the approval of the Principal



Timetable 2023 - 2024

- We are using a Decision-Making Matrix to help us make an informed decision based on the following educational values with regards to creating a schedule structure:
 1. **Opportunities for student learning**
 2. **Student Supports and Access**
 3. **Student workload & well-being**
 4. **Staff workload & well-being**
 5. **Flexibility in scheduling options**



Timetable 2023 - 2024

- We are currently working with school staff, the school district and Ministry of Education regarding our school structure for next year:
 - **Semester**
 - Semester 1: September – January (4 blocks)
 - Semester 2: February – June (4 blocks)
 - **Linear**
 - September – June (8 blocks)
 - **Hybrid**
 - *Combination of semester and linear courses within a timetable*
- *A decision will be communicated to parents prior to Spring Break (March 10th)*



Sample Daily Bell Schedule Semester

(4 classes daily Sept – Jan & Feb - June)

PERIOD	Mon (Day 1)	Tues (Day 2)	Wed (Day 1)	Thurs (Day 2)	Fri (Day 1)	Wed Bell Schedule
Period 1 8:30 – 9:40am	A	B	<i>COLLAB</i>	B	A	<i>Collaboration</i> 8:30 – 9:30am
Flex Block 9:45 – 10:20am	<i>Flex</i>	<i>Flex</i>	A	<i>Flex</i>	<i>Flex</i>	<i>Period 1</i> 9:30 – 10:35am
Period 2 10:25 – 11:35am	B	A	B	A	B	<i>Period 2</i> 10:40 – 11:45am
LUNCH 11:35 – 12:15pm	<i>Lunch Break</i>	<i>Lunch Break</i>	<i>Lunch Break</i>	<i>Lunch Break</i>	<i>Lunch Break</i>	<i>LUNCH</i> 11:45am – 12:25pm
Period 3 12:20 – 1:30pm	C	D	C	D	C	<i>Period 3</i> 12:30 – 1:35pm
Period 4 1:35 – 2:45pm	D	C	D	C	D	<i>Period 4</i> 1:40 – 2:45pm

Sample Daily Bell Schedule Linear

(8 classes Alternating September to June)

PERIOD	Mon (Day 1)	Tues (Day 2)	Wed (Day 3)	Thurs (Day 4)	Fri (Day 1)	Wed Bell Schedule
Period 1 8:30 – 9:40am	A	E	<i>COLLAB</i>	F	A	<i>Collaboration</i> 8:30 – 9:30am
Flex Block 9:45 – 10:20am	<i>Flex</i>	<i>Flex</i>	B	<i>Flex</i>	<i>Flex</i>	<i>Period 1</i> 9:30 – 10:35am
Period 2 10:25 – 11:35am	B	F	A	E	B	<i>Period 2</i> 10:40 – 11:45am
LUNCH 11:35 – 12:15pm	<i>Lunch Break</i>	<i>Lunch Break</i>	<i>Lunch Break</i>	<i>Lunch Break</i>	<i>Lunch Break</i>	<i>LUNCH</i> 11:45am – 12:25pm
Period 3 12:20 – 1:30pm	C	G	D	H	C	<i>Period 3</i> 12:30 – 1:35pm
Period 4 1:35 – 2:45pm	D	H	C	G	D	<i>Period 4</i> 1:40 – 2:45pm

Contacts for Questions

- Speak to your Counsellor, Career Advisor or Teachers, gather as much information as you can, it will help you make good decisions.
- **Counsellors:**
 - Last Name A – Cli Mr. Lalli (W/R/F) hlalli@deltaschools.ca
 - Last Name Clo – Li Mrs. Greene sgreene@deltaschools.ca
 - Last Name Lj – O & INT'L Mrs. Rohwer erohwer@deltaschools.ca
 - Last Name P – Z Mrs. Gillis bgillis@deltaschools.ca
- ***Career & Post-Secondary Advisor***
 - Mrs. Kim Jew kjew@deltaschools.ca
- Course selection booklet available on the school's website:
 - www.de.deltasd.bc.ca



Questions ?

